




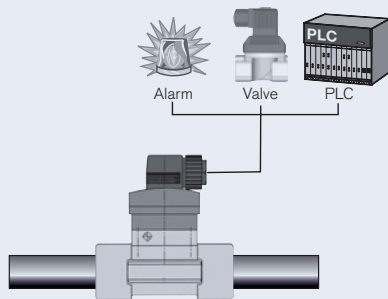
Magnetic paddle (flipper) flow switch for ON/OFF control

- ON/OFF Control System for Monitoring and Switching
- Mechanical adjustment of setpoint
- No contact to Fluid thanks to INLINE "Turn & Lock" Technique
- Approval: 

DTS 1000082461 EN Version: B Status: RL (released | freigegeben | validé) printed: 20.01.2015

This mechanical single paddle (flipper) Sensor/Switch is specially designed for monitoring minimum/maximum values of flow. The switching point can be set by turning a spring screw. The switching is done by a moving magnet and a reed contact. The connection to the process in the piping is done with the easy to connect "Turn & Lock" technique of the INLINE fittings.

Monitoring - Min./Max. values



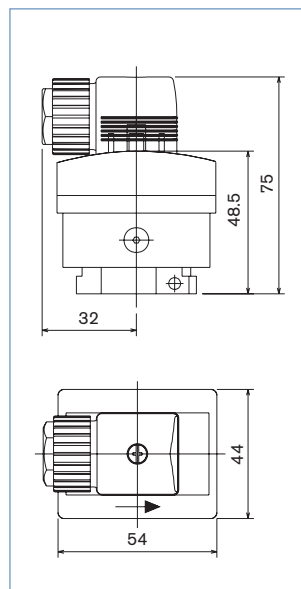
Process Specification	
Pipe diameter	1/2" up to 2"
Switching range	see table
Fitting	Burkert INLINE fitting S010
Housing material	PC+20% glass fiber
Sensor element	reed contact on single paddle
Electrical Specification	
Reed contact output:	
Max. switching voltage	0 – 150 VDC, 0 – 250 VAC
Max. switching current	0.8 A
Max switching power	50 W
Recommended max. cable length	100 m shielded, section 0.14 – 0.50 mm ²
Electrical Connections	
Optional EaseOn cable plug	3 wire, plug in-turn off
Cable plug	DIN 43650A
Environment Specifications	
Fluid temperature max.	131°F
Ambient temperature max.	32°F up to 131°F
Fluid pressure max.	PVC, PP, PVDF: 140 PSI Metal fitting: 230 PSI
Type of protection	NEMA 4 (IP 65) with connector plugged in
Standards	
EMI	EN 50081-1, 50082-2, 61010-2

Ordering table for SE10 (electronic SE10 and sensor fitting S010 build the 8010)
ON/OFF Flow Control System, mechanical, magnetic paddle INLINE type

Output	Connector	Item no.
reed contact NO	Connector cable plug DIN, PG9	438 087 L
reed contact NC	Connector cable plug DIN, PG9	438 088 V

Fittings with Magnetic Sensor Paddle (flipper)- PVC, PVDF, PP, Stainless Steel or Brass
(see datasheet fittings S010)

Dimensions [mm]

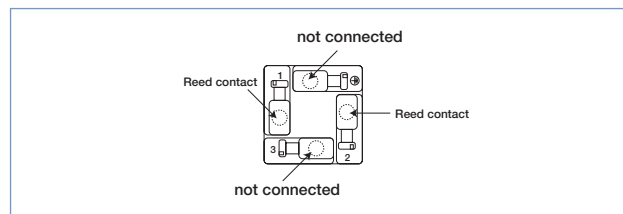
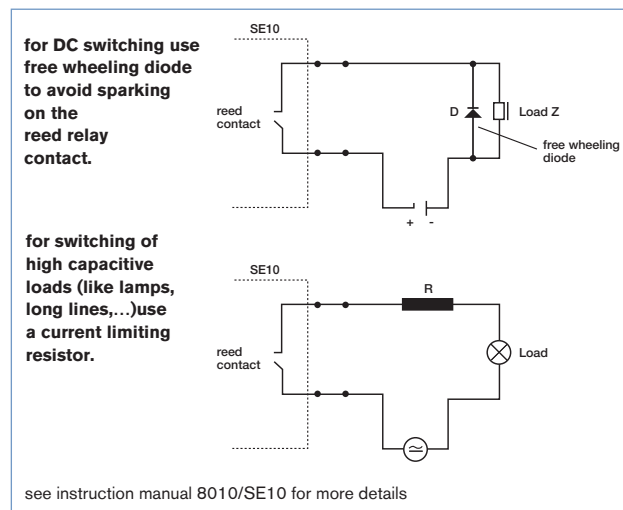


Variable dimensions [mm]

Magnetic paddle (flipper) flow switch Type 8010

Range 1 or 2	Fitting DN (in)	Fluid velocity (water) (ft/s)		Flow rate (gal/mn)		Flow rate (ft ³ /h x 35.3)	
		min	max	min	max	min	max
1	1/2	2.13	-> 2.95	1.82	2.51	14.5	20.1
	1/2	1.97	<- 2.62	1.09	2.25	13.4	15.0
1	3/4	1.15	-> 1.80	1.74	2.75	14.1	21.9
	3/4	0.82	<- 1.48	1.24	2.25	9.88	18.0
2	1 1/4	0.59	-> 0.92	2.25	3.57	18	28.6
	1 1/4	0.49	<- 0.72	1.85	2.77	14.8	29.3
1	1	1.31	-> 1.97	3.12	4.68	25.0	37.4
	1	0.98	<- 1.64	2.32	3.88	18.7	31.1
2	1 1/2	0.82	-> 1.48	4.97	8.96	41.3	72.0
	1 1/2	0.67	<- 1.15	3.99	6.97	31.8	55.8
1	1 1/4	2.13	-> 2.95	8.30	11.47	66.4	92.1
	1 1/4	1.80	<- 2.30	7.00	8.93	56.1	71.7
2	2	1.61	-> 1.94	15.32	18.49	122.8	148.30
	2	1.18	<- 1.67	11.10	15.85	89.0	127.10
1	1 1/2	2.46	-> 3.28	14.93	19.92	118.7	159.60
	1 1/2	1.97	<- 2.95	11.94	17.94	95.7	143.7

Electrical connection - Reed contact version



Switching range table for fitting PVC, PVDF, PP, SS, Brass

